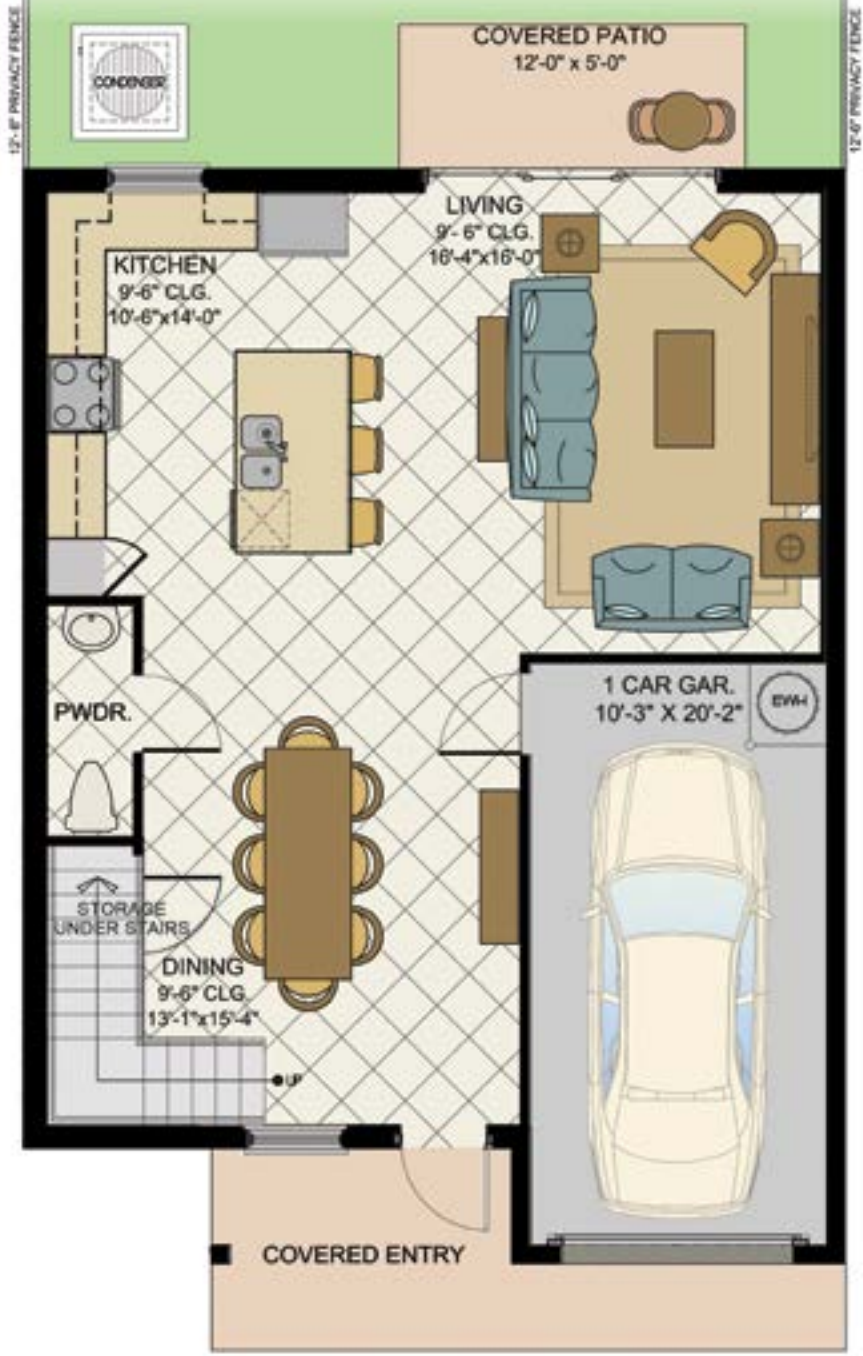
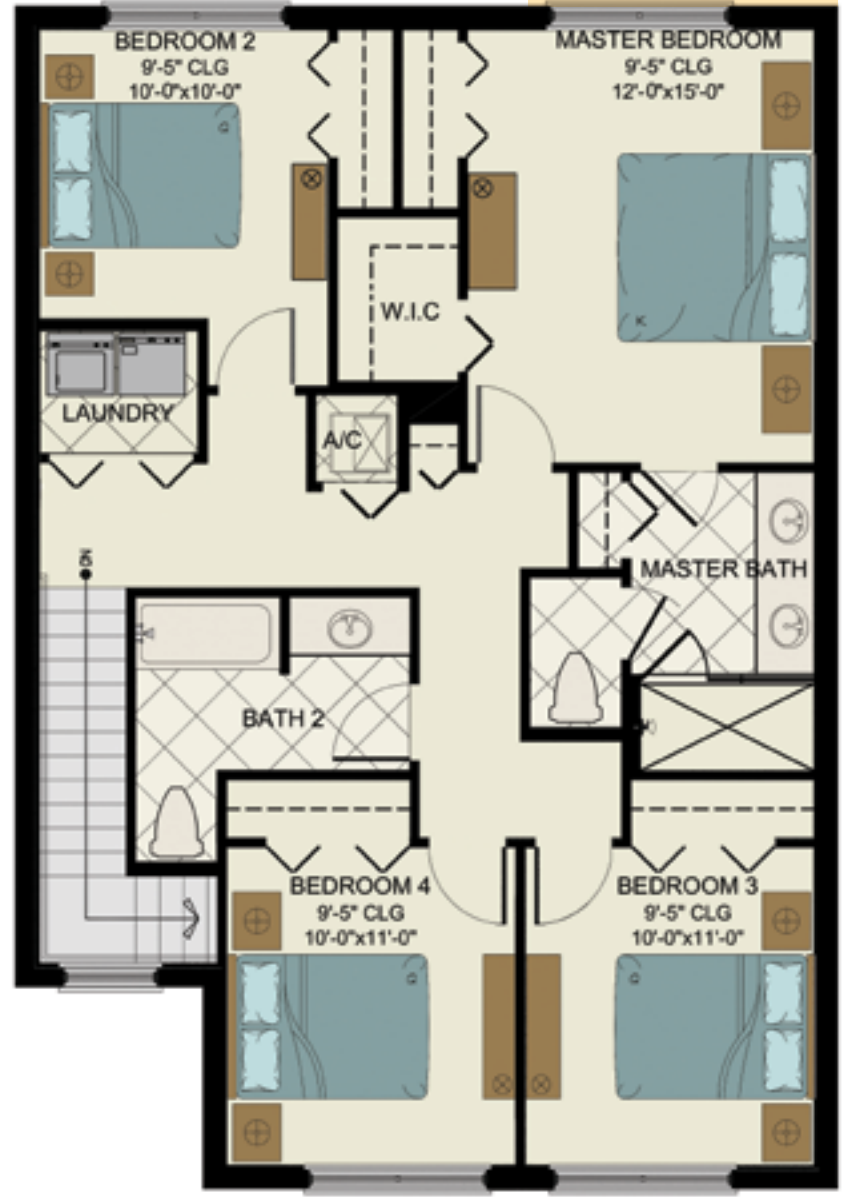


ORCHID ◦ 4 bedrooms ◦ 2-1/2 bath ◦ 1 car garage

1st Floor A/C	767 s.f.
2nd Floor A/C	1098 s.f.
TOTAL A/C	1865 S.F.
Garage	223 s.f.
Covered Entry	107 s.f.
Covered Patio	60 s.f.
GROSS TOTAL	2255 S.F.



ORCHID 1ST FLOOR



ORCHID 2ND FLOOR



Architectural pictures may be from other Label & Co. developments and are displayed as they depict similar architecture and lifestyles to Chapel Grove. All dimensions, specifications, artist's renderings, features, prices and availability subject to change. Oral representations cannot be relied upon as correctly stating the representations of the developer. For correct representations, make reference to project documents provided by a developer to a buyer or lessee. Not an offer where prohibited by state statutes. CBC1259120